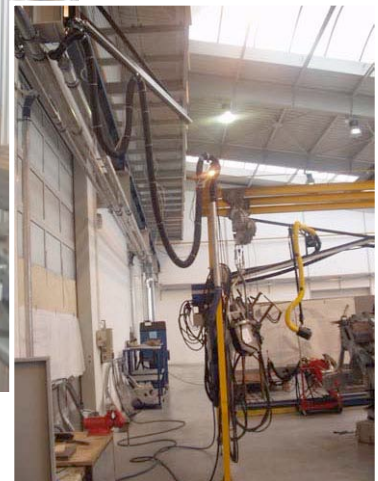


Case Story

Extraction of welding smoke at Kovovyroba in Czech Republic

Situation: Spot welding creates a small amount of welding fumes but as a large number of spots are welded the accumulated fume creates a problem. Kovovyroba tried to use simple portable units, but that created problems with space requirements, clog-up of the filters, filter burning etc.



Solution: An E-PAK 1000 AS was installed, together with extension arms EA, balance arms BA and silenced nozzles with micro switch. The installation also serves three workplaces for grinding and sanding.

Benefits: As a spot welding tool is constantly moved the extraction had to be very flexible. The Balance arms offer this flexibility. The nozzles are silenced to avoid disturbing noise.

The efficiency is obvious as the amount of fumes are drastically reduced and the maintenance cost is brought to a minimum.